



Crestron makes life greener™





LEED®



The Crestron Difference

The only complete fully
integrated control solution.

Total, seamless integration with Crestron lighting, thermostats, shade control, audio/video distribution, amplifiers, digital video and surround sound processors, amplifiers, camera control and third-party products.

Enhanced user experience and control from Crestron touchpanels, keypads and handhelds.

Ethernet communications for web-based control and management, including email alerts, from laptops, PCs and PDAs.

Advanced features such as room scheduling, room combining, load shedding, daylight harvesting, and personal workspace control.





Totally Integrated Building Control

Crestron delivers complete building management for maximum energy and operational efficiency. Only Crestron can monitor, manage, and control all the technology throughout the entire facility both centrally and globally.

CRESTRON GREEN LIGHT® technology provides total environmental control to conserve energy and lower costs by combining automated dimming and daylight harvesting with power switching and load shedding.

Crestron touchpanels offer a global view and management of all systems and devices building-wide from a centralized command center, or local control from touchpanels in each room. Monitor and control HVAC, shades, audio/video distribution and presentation systems throughout the building from the same Crestron touchpanel.





Monitor, manage and control all environmental and AV presentation systems throughout the building.

View precise lighting levels, temperature and shade positions in every room graphically and quantitatively from any touchpanel or PC. Monitor and track current and historical energy consumption, and intelligently manage resources.



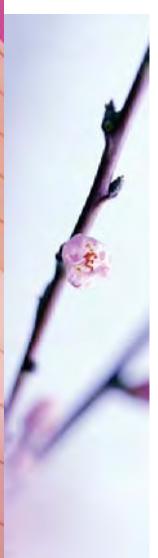
Monitoring & Management



Control every light, shade, audio/video source and display device centrally and globally on a single platform.

Ethernet connectivity enables LAN or Web-based system control and management, and sends email advisories about pre-determined events such as automatic load shedding due to high levels of energy usage.

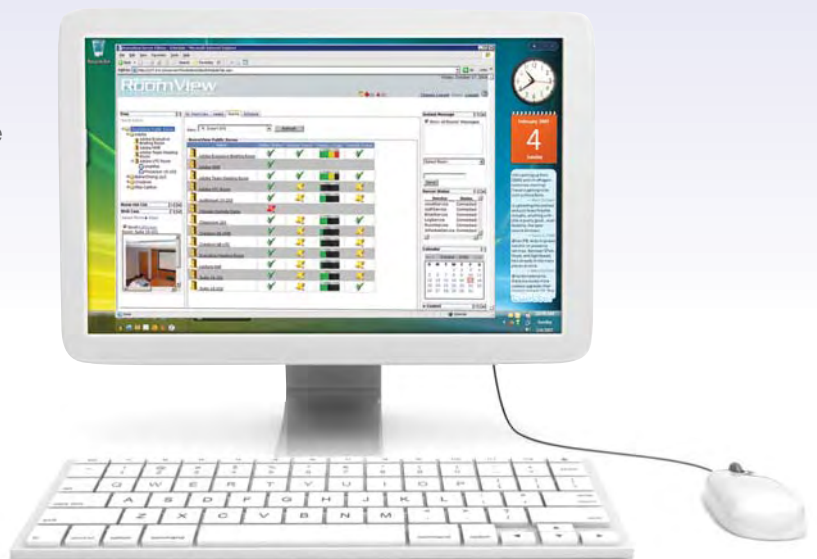




Managing energy consumption and realizing real cost savings must extend beyond lighting and thermostats.

Significant electrical energy waste results from AV and IT equipment left on when not in use. Integrated within a Crestron control environment, even personal workspace devices such as computers, printers and desk lamps may be programmed to automatically shut down.

Crestron audio video distribution systems feature sync-sensing to automatically turn off displays and projectors when no active source is detected. Even Crestron touchpanels go “to sleep”, drawing less power when not in use.



Only Crestron RoomView® enterprise management software provides robust reporting and a single view of every AV, IT and environmental device throughout the building.



Schedule rooms using MS Outlook® directly from Crestron touchpanels integrated with Microsoft® Exchange Server. When a room is scheduled, thermostats can adjust, and lights and AV equipment can automatically turn “ON” prior to the start of the meeting. If the meeting is rescheduled, or after the participants leave the room, all settings and equipment can return to “vacancy” levels.



AV & Room Scheduling





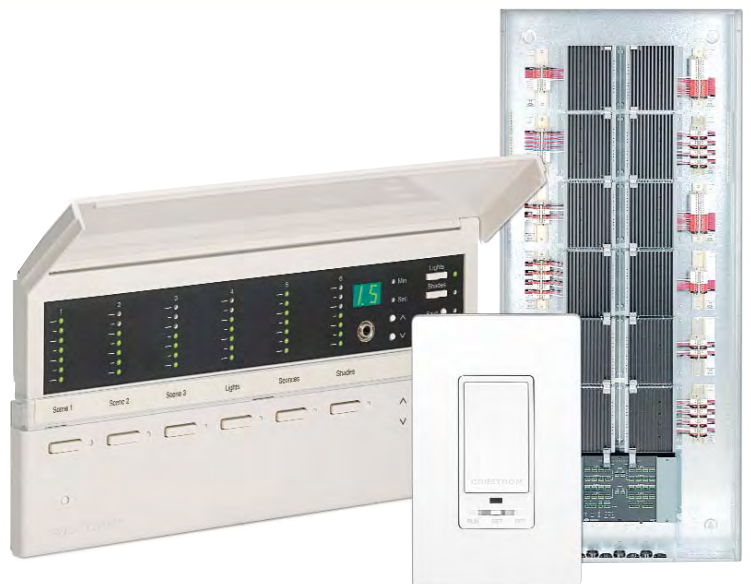
Lighting



Simple one-touch dimming of individual lights and groups of lights puts you in absolute control.

Set the precise lighting scene for maximum productivity and security while saving energy and money. When turning the lights “ON”, pre-set the maximum level to 90 percent – the only noticeable difference will be on the electric bill.

Automation features, such as built-in motion detection and occupancy sensors, turn lights on only when a room is in use, and schedule lights to turn off after business hours to reduce light pollution.



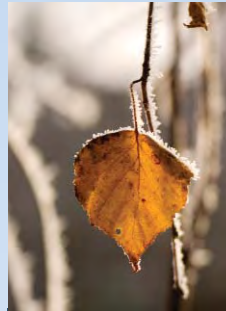


Thermostats

Schedule thermostats to set back the temperature when rooms are not in use, after hours, and during weekends and holidays.

Control rooms or zones independently so the HVAC system is heating or cooling only those areas that are occupied, not the entire building.





Daylight harvesting uses natural light to illuminate the lobby, hallways, conference rooms and other common areas, supplemented by electrical light when necessary for task or fill lighting.

Shades & Drapes



Schedule shades and drapes to rise when a meeting is scheduled; gently lower to reduce glare when the projector is turned on.

Intelligent control manages all environmental systems to achieve maximum energy savings without compromising comfort or convenience. Balance the need for light with climate control.

Use direct sunlight in the winter to naturally warm a room; lower shades to reduce solar heat gain in the summer to keep the room comfortable without using air conditioning.



LEED®



Crestron Electronics, Inc. 15 Volvo Drive | Rockleigh, NJ 07647

Tel: 800.237.2041 / 201.767.3400 | Fax: 201.767.1903

www.crestron.com

Printed in USA Doc. 4814B 6/09

Printed on 100% post-consumer fiber paper. All brand names, product names and trademarks are the property of their respective owners.

©2009 Crestron Electronics, Inc.



100%

